



AGRICULTURAL RUBBER TRACKS

FOR QUADTRAC TRACTORS AND COMBINE HARVESTERS



60 MONTHS

THE LONGEST WARRANTY IN THE INDUSTRY*

**Consult your dealer for the complete terms.*

COMMITTED TO EXCELLENCE !

Soucy is proud to present its all new rubber track for Quadtrac and combine harvesters - the result of 50 years of experience in the development, design and manufacture of rubber tracks. Representing a durable and high-performance alternative for Quadtrac and combine harvester owners, the track's clean design thanks to its compression moulding conception and its profile optimized for performance, comfort and durability combine to make it an indispensable track.

1 COMPRESSION Moulding: A UNIFORM AND SOLID TRACK
The engineers at Soucy have developed state-of-the-art moulding equipment that helps ensure the tracks' uniformity and integrity:

No assembly of the profile and traction teeth in the moulding process.

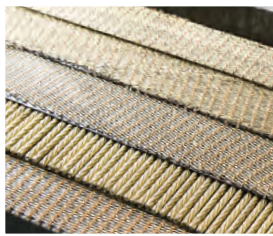
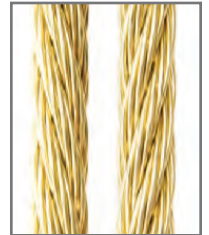
Tracks moulded in one piece in a single step.

Extremely strong links between the profile and the track, which eliminates delamination.

The most uniform tracks.

2 SZ CABLES: A TRACK THAT STAYS IN PLACE

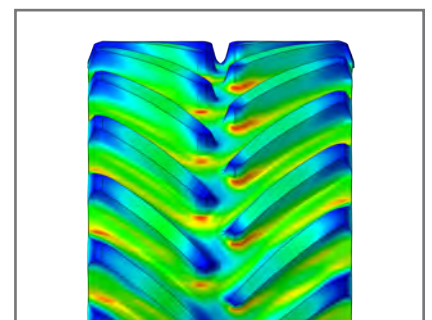
In order to prevent untwisting of the cables and ensure optimal alignment of the track, cables wrapped in opposite directions (S and Z cables) are positioned alternately inside the track from the middle to the outside. This installation method enables a uniform and optimal tension throughout the track's life span, ensuring high performance and longevity.



THE ONLY 4 PLY TRACK IN ITS CLASS



3 NOTHING IS LEFT TO CHANGE
The use of highly sophisticated design and simulation software combined with exhaustive validation in the field let engineering teams optimize all properties of the track including its performance in terms of vibration, load distribution, heat generation and durability. Thanks to data gathered from thousands of hours of calculations, our tracks achieve unmatched level of performance.





SPECIFICATIONS

Track model	Length in (mm)	Width in (mm)	Thickness in (mm)	Height of profile in (mm)	Steel layer qty	Cable diameter in (mm)	Weight lbs (kg)
252/30	252 (6,400)	30 (762)	1.25 (32)	2 (51)	4	0.205 (5.2)	891 (404.2)
252/36	252 (6,400)	36 (914)	1.32 (34)	2.25 (57)	4	0.205 (5.2)	1,128 (511.7)

COMPATIBILITY

TRACTORS	Brand	Model
	Case IH Quadtrac	385, 435, 450, 470, 485, 500, 535, 540, 550, 580, 600, 620 STX375, STX380, STX425, STX430, STX440, STX-450, STX480, STX500, STX530
COMBINE HARVESTERS	Brand	Model
	Case IH Axial Flow	120, 230, 240 Series
	New Holland	CR Series

DEVOTED PEOPLE, PERSONAL SERVICE

At Soucy, customer satisfaction is a priority. Inspired by the time-honoured values of the company and the Soucy family, our sales and service teams are dedicated to establishing a healthy, sustainable and trustworthy relationship with their customers.



SOUCY GROUP

With over 1,500 employees throughout ten facilities located in America, Europe and Asia, the Soucy group designs and produces various components for leading manufacturers of recreational, industrial, agricultural and defense vehicles. Soucy is recognized in the industry as a strategic supplier in the original equipment market, mainly thanks to its technological innovations and its high quality products.



MR. GILLES SOUCY, AN ENTHUSIAST IF EVER THERE WAS ONE

Starting off as a farmer and heavy machinery operator, Mr. Gilles Soucy founded his business in 1967. Since then, being a businessman has not dampened his passion for machinery, and it still guides his product development decisions. For Mr. Soucy, all clients are members of the family. That's why he makes it his duty to satisfy them and make them proud of using his products, just as he is proud to have them as clients.



SOUCY INTERNATIONAL INC.
 Rubber Tracks Division
 5195 Richard Street
 P.O. Box 548
 Drummondville (Quebec) J2B 6W4
 CANADA

SERVICE :
TOLL-FREE (CANADA/UNITED STATES)
 1 877 474-6665
EMAIL
 INFO@SOUCY-GROUP.COM

WWW.SOUCY-TRACK.COM
WWW.SOUCY-GROUP.COM

