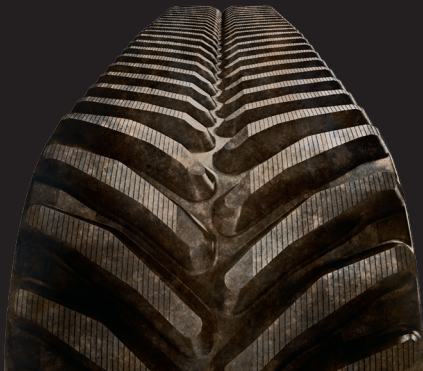


# Firestone

## AGRICULTURAL TRACKS





---

# AGRICULTURAL TRACKS

**FOR HIGH-HORSEPOWER TRACTORS**

Technological advancements, smart engineering and manufacturing expertise make Firestone Tracks your performance choice for today's agriculture. The result is a high-quality product and productivity in the field.



# MADE FOR AGRICULTURE. PROVEN TO PERFORM. BUILT TO LAST.

When it comes to tracks for agriculture, we understand the need for strength and durability. Our commitment to quality is unsurpassed.

**ADDED DURABILITY** – One-piece vulcanized for a seamless molded radius.

**SIDEWALL PROTECTION** – Pro-Edge technology provides extra protection.

**RUBBER COMPOUNDS** – Added wear and cut resistance.

**CABLE PACKAGE** – Engineered for optimum performance.

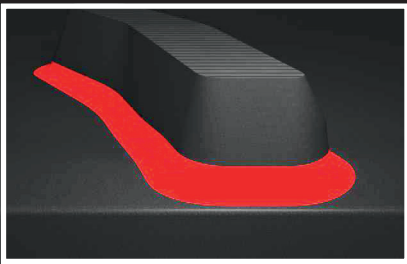
**FLEXIBLE STEEL CABLE** – Allows for exceptional durability.





# ONE-PIECE VULCANIZATION

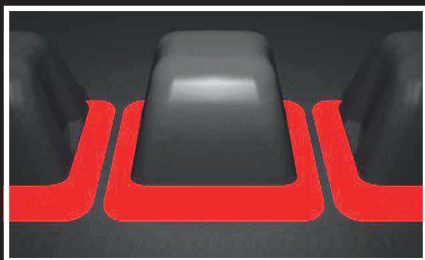
One-piece vulcanization provides a seamless molded radius for added strength and durability.



## TREAD BARS

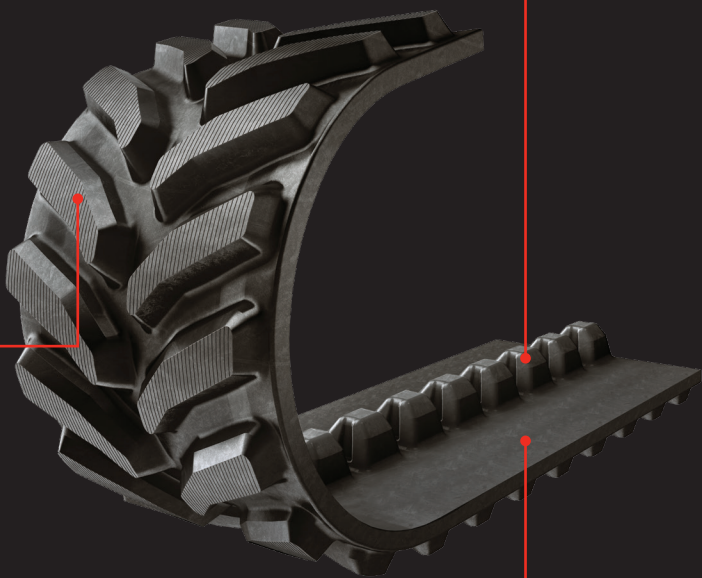
---

Tread bars and main carcass are vulcanized as one piece with a seamless molded radius. By using this process the tread bars remain steadfast to the rubber track.



## GUIDE LUGS

Guide lugs are vulcanized with the main carcass as one piece and made of a wear resistant rubber compound for added durability.



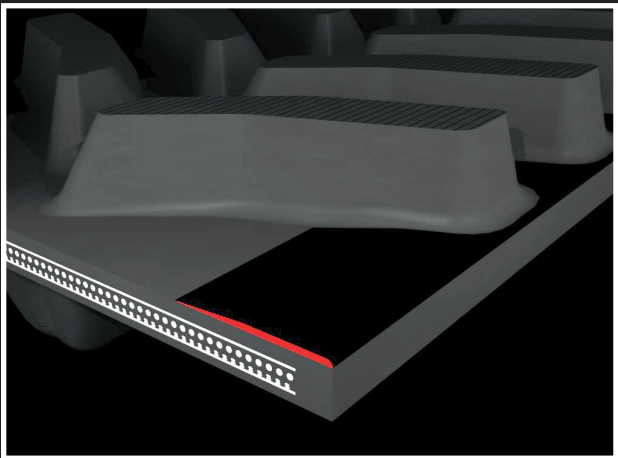
## INNER SURFACE

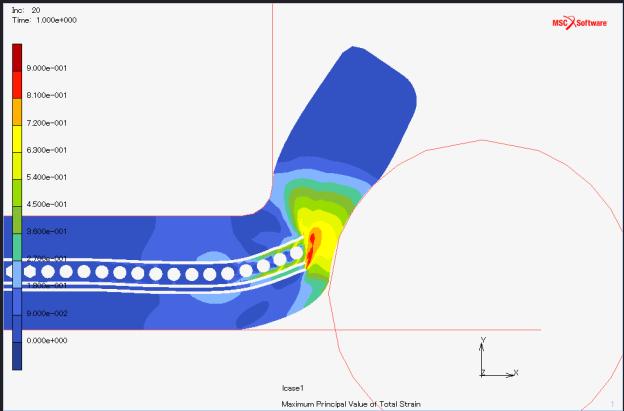
Rubber compounds formulated for the roller path area of the rubber track deliver added cut resistance.



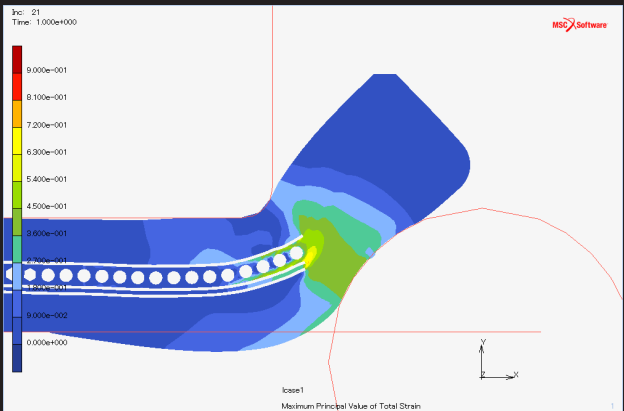
# PRO-EDGE SIDEWALL PROTECTION

Exposed track edges are vulnerable to abuse in field operations – and particularly during hard turns. Pro-Edge optimum sidewall protection technology, provides additional stiffness and protection for the main carcass.





When force is applied to tracks without Pro-Edge, higher bending and stress occur, increasing the likelihood of damage to the rubber track.



When the same force is applied to tracks with Pro-Edge, stress and bending are minimized, reducing the risk of damage.



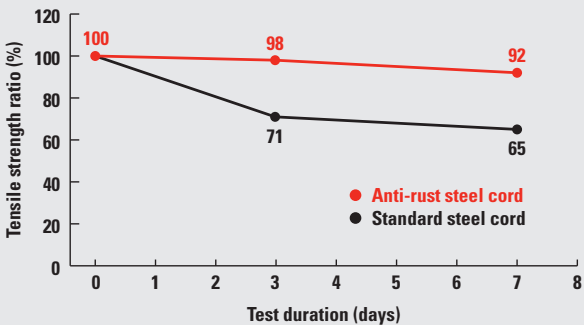
# A CABLE/PLY PACKAGE ENGINEERED TO PERFORM.

Our cable/ply package helps minimize uneven load distribution, reducing wear and damage to the inner surface of the rubber tracks.

# TOUGH AND FLEXIBLE STEEL CABLE

High performance steel cables within the cable/ply package are designed to meet the demand of today's high horsepower farm equipment. A precise balance of tensile strength and flexibility allows for exceptional durability.

## STEEL CORD ENVIRONMENTAL EXPOSURE







## TREAD DESIGN

Firestone tracks are available in a range of sizes and tread patterns. **Visit [FirestoneAg.com](https://www.firestoneag.com) for your specific needs.**

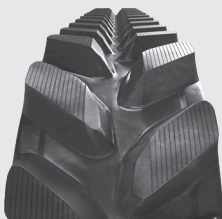
### TREAD PATTERN EXAMPLES

#### CLASS 4 AND 5



30" wide

#### CLASS 6



16" wide



30" wide

# RUBBER TRACK LIST

Material ID #	Series	Model Series	Track Width (in)	Tread Bars Qty
<b>AGCO Row Crop Series Tractors</b>				
3691	ALL TRAC CLS 6 16X44 ST	Challenger MT700	16	88
3678	ALL TRAC CLS 4 18X58 ST	Challenger MT700	18	116
3692	ALL TRAC CLS 6 18X44 ST	Challenger MT700	18	88
3693*1	ALL TRAC CLS 6 24X44 ST	Challenger MT700	24	88
3679	ALL TRAC CLS 4 24X58 ST	Challenger MT700	24	116
3694*2	ALL TRAC CLS 6 30X44 ST	Challenger MT700	30	88
3680	ALL TRAC CLS 4 30X58 ST	Challenger MT700	30	116
<b>AGCO Tillage Series Tractors</b>				
3687	ALL TRAC CLS 5 30X66 ST	Challenger MT800	30	132
3689	ALL TRAC CLS 6 30X50 ST	Challenger MT800	30	100
<b>CATERPILLAR Row Crop Series Tractors</b>				
3666	ALL TRAC CLS 4 18X53 ST	Challenger 35-55	18	106
3665	ALL TRAC CLS 4 24X53 ST	Challenger 35-55	24	106
3668	ALL TRAC CLS 4 30X53 ST	Challenger 35-55	30	106
<b>CATERPILLAR Tillage Series Tractors</b>				
3676	ALL TRAC CLS 4 24X56 ST	Challenger 65-95	24	112
3677	ALL TRAC CLS 4 30X56 ST	Challenger 65-95	30	112
<b>JOHN DEERE Row Crop Series Tractors</b>				
3691	ALL TRAC CLS 6 16X44 ST	8RT	16	88
3692	ALL TRAC CLS 6 18X44 ST	8RT	18	88
3693*1	ALL TRAC CLS 6 24X44 ST	8RT	24	88
3682	ALL TRAC CLS 5 24X59 ST	8RT	24	118
3694*3	ALL TRAC CLS 6 30X44 ST	8RT	30	88

\*1 Available 1<sup>st</sup> Qtr 2018

\*2 Available 2<sup>nd</sup> Qtr 2018

\*3 Available 3<sup>rd</sup> Qtr 2018

When changing your rubber track, please refer to your equipment manufacturer for proper procedure.



Tread Height (in)	Tread Pitch (in)	Guide/ Drive Lug Qty	Carcass Plies	Carcass Main Cable Size (mm)	Carcass Thickness (mm)	Carcass Edge Thickness (mm)
<b>AGCO Row Crop Series Tractors</b>						
2.56	8.03	44	4	4.5	41	48.5
1.97	6.00	58	4	4.5	37	45.5
2.56	8.03	44	4	4.5	41	48.5
2.56	8.03	44	4	5.3	41	46.0
1.97	6.00	58	3	4.5	37	46.0
2.56	8.03	44	4	5.3	41	46.0
1.97	6.00	58	3	4.5	37	46.0
<b>AGCO Tillage Series Tractors</b>						
1.97	6.00	66	4	5.3	41	50.0
2.76	7.91	50	4	5.3	41	46.0
<b>CATERPILLAR Row Crop Series Tractors</b>						
1.97	6.00	53	3	4.5	37	45.5
1.97	6.00	53	3	4.5	37	46.0
1.97	6.00	53	3	4.5	37	46.0
<b>CATERPILLAR Tillage Series Tractors</b>						
1.97	6.00	56	3	4.5	37	46.0
1.97	6.00	56	3	4.5	37	46.0
<b>JOHN DEERE Row Crop Series Tractors</b>						
2.56	8.03	44	4	4.5	41	48.5
2.56	8.03	44	4	4.5	41	48.5
2.56	8.03	44	4	5.3	41	46.0
1.97	6.00	59	4	5.3	41	50.0
2.56	8.03	44	4	5.3	41	46.0

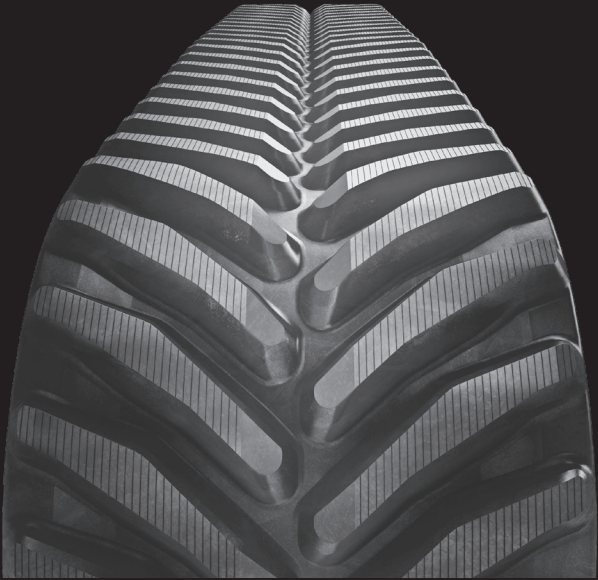
Material ID #	Series	Model Series	Track Width (in)	Tread Bars Qty
<b>JOHN DEERE Row Crop Series Tractors</b>				
3683	ALL TRAC CLS 5 30X59 ST	8RT	30	118
3670	ALL TRAC CLS 6 16X41 ST	8000T	16	82
3672	ALL TRAC CLS 4 24X54 ST	8000T	24	108
3675	ALL TRAC CLS 4 30X54 ST	8000T	30	108
<b>JOHN DEERE Tillage Series Tractors</b>				
3684	ALL TRAC CLS 6 30X48 ST	9000T	30	96
3685	ALL TRAC CLS 5 36X63 ST	9000T	36	126
3688	ALL TRAC CLS 6 30X49 ST	9030T/9RT	30	98
3686*2	ALL TRAC CLS 5 36X65 ST	9030T/9RT	36	130
<b>JOHN DEERE Harvester Series Tractors</b>				
3669	ALL TRAC CLS 3 34X46 ST	Harvester	34	92

\*2 Available 2<sup>nd</sup> Qtr 2018

When changing your rubber track, please refer to your equipment manufacturer for proper procedure.

Tread Height (in)	Tread Pitch (in)	Guide/ Drive Lug Qty	Carcass Plies	Carcass Main Cable Size (mm)	Carcass Thickness (mm)	Carcass Edge Thickness (mm)
<b>JOHN DEERE Row Crop Series Tractors</b>						
1.97	6.00	59	4	5.3	41	50.0
2.56	7.91	41	4	4.5	41	46.0
1.97	6.00	54	3	4.5	37	46.0
1.97	6.00	54	3	4.5	37	46.0
<b>JOHN DEERE Tillage Series Tractors</b>						
2.76	7.91	48	4	5.3	41	55.0
1.97	6.00	63	4	5.3	41	55.0
2.76	7.91	49	4	5.3	41	55.0
1.97	6.00	65	4	5.3	41	55.0
<b>JOHN DEERE Harvester Series Tractors</b>						
1.97	6.00	46	3	4.5	32	23.0

**BRIDGESTONE AMERICAS TIRE OPERATIONS, LLC**  
AGRICULTURAL DIVISION



## **AGRICULTURAL RUBBER TRACKS**

**LIMITED PRO RATA WARRANTY –  
AGRICULTURAL USE**  
FOR FIRESTONE-BRANDED AGRICULTURAL  
RUBBER TRACKS

**EFFECTIVE JULY 1, 2015**

**WARRANTY**

**Firestone**

**FirestoneAg.com**

## LIMITED WARRANTY

### FOR FIRESTONE AGRICULTURAL USE TRACKS

#### TRACKS COVERED

This Limited Warranty covers all new Firestone-branded Agricultural Rubber Tracks, used in normal agricultural service, when purchased from a Bridgestone Americas Tire Operations, LLC (BATO) authorized dealer or distributor (the "Covered Ag Tracks").

Reference the Firestone Warranty Brochure or visit [Commercial.Firestone.com/en\\_us/warranty](https://Commercial.Firestone.com/en_us/warranty) for full details.

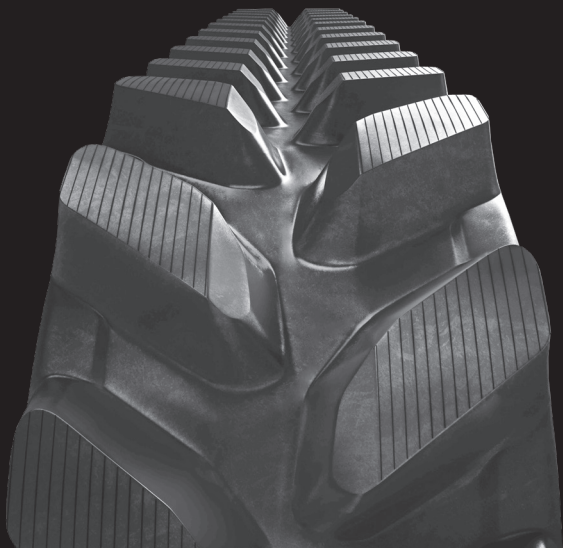
Have a technical question? Contact Field Engineering:

**1-800-TIRE ENG (847-3364)**

Need additional information?

**[FirestoneAg.com](https://FirestoneAg.com)**

**BRIDGESTONE AMERICAS TIRE OPERATIONS, LLC**  
AGRICULTURAL DIVISION



## **AGRICULTURAL RUBBER TRACKS**

**LIMITED PRO RATA WARRANTY –  
NON-AGRICULTURAL/INDUSTRIAL USE**  
FOR FIRESTONE-BRANDED AGRICULTURAL  
RUBBER TRACKS USED FOR NON-AGRICULTURAL/  
INDUSTRIAL USE

**EFFECTIVE JULY 1, 2015**

**WARRANTY**

**Firestone**

**FirestoneAg.com**



## LIMITED WARRANTY

### FOR FIRESTONE NON-AGRICULTURAL/INDUSTRIAL USE TRACKS

#### TRACKS COVERED

This Limited Warranty covers new All Traction Class 5 and All Traction Class 6 Firestone-branded Agricultural Rubber Tracks purchased from a Bridgestone Americas Tire Operations, LLC (BATO) authorized dealer that are used for non-agricultural/industrial use (the “Covered Rubber Tracks”). All Traction Class 3 and All Traction Class 4 Firestone-branded Agricultural Rubber Tracks are not subject to any warranty for non-agricultural/industrial use.

Reference the Firestone Warranty Brochure or visit [Commercial.Firestone.com/en\\_us/warranty](http://Commercial.Firestone.com/en_us/warranty) for full details.

Have a technical question? Contact Field Engineering:

**1-800-TIRE ENG (847-3364)**

Need additional information?

**FirestoneAg.com**





