



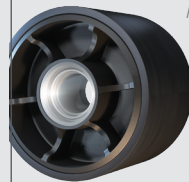
**We don't just make world-class track, we make world-class everything.** With over 100 years of experience, our state-of-the-art solutions put in a hard day's work. Our wheels, mount components and molded products deliver less downtime, fewer crop losses and lower operating costs per hour.

## Trackman®

*Re-manufactured  
Polyurethane Wheels*



### Roll with the Best



*Most trusted manufacturer of advanced undercarriage wheels and mounts including our advanced re-manufactured polyurethane wheels.*

*Trackman® leads the polyurethane wheel pack in innovation for positive-drive and friction-drive systems.*

*Our wheels diffuse friction more efficiently and operate cooler without sacrificing abrasion resistance to outlast the competition. This durable design helps prevent erosion and extends the life of your track.*

### Revolutionary ContiBond™ Process



*Exclusive proprietary metal/rubber bonding process for best-in-class performance.*

*Field-tested technology that's proven to excel in the toughest applications.*

*Coollest-running undercarriage parts extend component and track life.*

*Available for the most demanding applications.*

Trackman®  
OUTWORKS. OUTLASTS. OUTPERFORMS. OUT HERE.

# Trackman®

## Re-manufactured Polyurethane Wheels



### Cat® 65-95 615760

Cat Part #.....9U-3384  
Hub.....Steel  
Molded OD.....14"  
Width.....8.5"  
Max Weight.....55 lbs.



### Cat® 35-55 615850

Cat Part #.....1R-1365  
Hub.....Steel  
Molded OD.....14"  
Width.....5.5"  
Max Weight.....36 lbs.



### Challenger Narrow 615880

AGCO Part #.....1R-1239  
Hub.....Steel  
Molded OD.....14"  
Width.....4.8"  
Max Weight.....29 lbs.



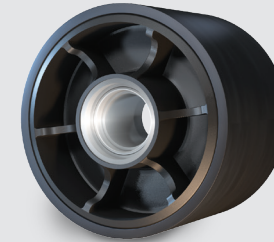
### Challenger Medium 614870

AGCO Part #.....548349D1  
Hub.....Steel  
Molded OD.....14"  
Width.....5.5"  
Max Weight.....37 lbs.



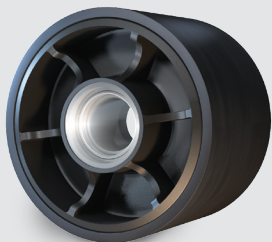
### Challenger Wide 614860

AGCO Part #.....548350D1  
Hub.....Steel  
Molded OD.....14"  
Width.....10"  
Max Weight.....53 lbs.



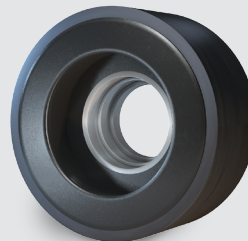
### CNH Quadtrac™ 616280

Case Part #.....251343A3  
Hub.....Cast Iron  
Molded OD.....13.2"  
Width.....10.4"  
Max Weight.....104 lbs.  
*\*2006 and older models.*



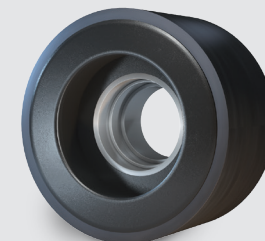
### CNH Quadtrac™ 614880

Case Part #.....48065298  
Hub.....Cast Iron  
Molded OD.....13.2"  
Width.....10.4"  
Max Weight.....104 lbs.  
*\*2007 and newer models.*



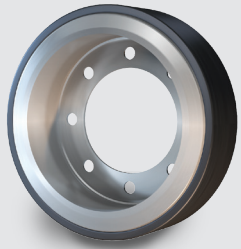
### CNH Rowtrac™ Narrow Roller 615620

Case Part #.....48145599  
Hub.....Cast Iron  
Molded OD.....13.2"  
Width.....6.5"  
Max Weight.....57 lbs.



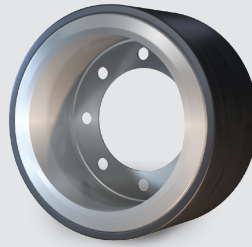
### CNH Rowtrac™ Wide Roller 616020

Case Part #.....48145600  
Hub.....Cast Iron  
Molded OD.....13.2"  
Width.....8"  
Max Weight.....89 lbs.



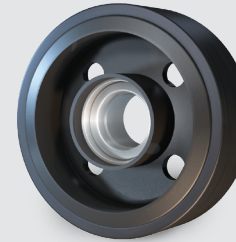
**John Deere® 8RT  
Narrow  
615010**

JD Part #..... RE266293  
Hub..... Steel  
Molded OD..... 17"  
Width..... 5"  
Max Weight..... 48 lbs.



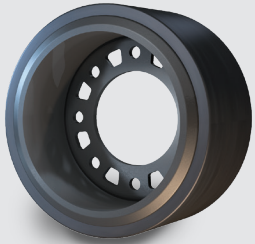
**John Deere® 8RT  
Wide  
615570**

JD Part #..... RE272331  
Hub..... Steel  
Molded OD..... 17"  
Width..... 9.3"  
Max Weight..... 85 lbs.



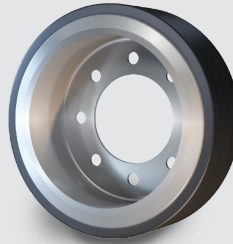
**John Deere® 8000T  
Bearing Bore  
615580**

JD Part #..... RE165014  
Hub..... Cast Iron  
Molded OD..... 14.6"  
Width..... 5.1"  
Max Weight..... 76 lbs.



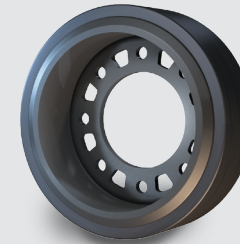
**John Deere® 8000T  
Cast Iron Wide Bolt On  
615590**

JD Part #..... RE254787  
Hub..... Cast Iron Bolt On  
Molded OD..... 14.6"  
Width..... 8"  
Max Weight..... 89 lbs.



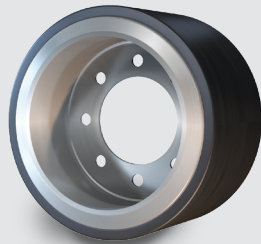
**John Deere® 8000T  
Narrow Bolt On  
615840**

JD Part #..... RE254786  
Hub..... Steel  
Molded OD..... 14.6"  
Width..... 4.6"  
Max Weight..... 33 lbs.



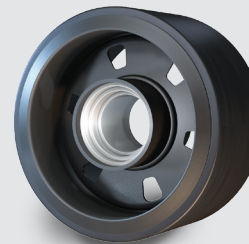
**John Deere® 8000T  
Cast Iron Narrow Bolt On  
615890**

JD Part #..... RE212733  
Hub..... Cast Iron Bolt On  
Molded OD..... 14.6"  
Width..... 4.9"  
Max Weight..... 53 lbs.



**John Deere® 9RT  
615560**

JD Part #..... RE251071  
Hub..... Steel  
Molded OD..... 14.6"  
Width..... 9.1"  
Max Weight..... 67 lbs.  
*\*Also fits 8000T and 9000T models.*



**John Deere® 9000T  
Bearing Bore  
615910**

JD Part #..... RE200310  
Hub..... Cast Iron  
Molded OD..... 14.6"  
Width..... 8"  
Max Weight..... 123 lbs.



*Just like our track, our warranty is second to none.*

*In accordance with the Continental Trackman Rubber Track warranty, the track is covered against material and/or workmanship defects. For complete warranty information, contact your rubber track dealer or visit our website at [Continental-Trackman.com](http://Continental-Trackman.com).*

## Conveyor Belt Group

Market segment

Rubber Track

Contact

ContiTech USA, Inc.

703 S. Cleveland Massillon Road

Fairlawn, OH 44333-3023 U.S.A.

1-877-394-0482

[trackinquiries@contitech.us](mailto:trackinquiries@contitech.us)

Your local contact

[www.contitech.de/contactlocator](http://www.contitech.de/contactlocator)

Trackman

[continental-trackman.com](http://continental-trackman.com)

## Smart Solutions Beyond Rubber

The ContiTech division of the Continental Corporation is one of the world's leading industry specialists. As a technology partner, our name is synonymous with expertise in development and materials for components made of natural rubber and plastics and also in combination with other materials such as metal, fabrics or silicone. By integrating electronic components, we are also generating solutions for the future.

Beyond products, systems and services we also provide holistic solutions and have a formative influence on the industrial infrastructure. We see digitalization and current trends as an opportunity to work with our customers to add sustainable value - for both sides and for good.